

Cal-PASSPlus

Your Students  
Your Programs  
Your Data Services  
**FREE**

Cal-PASS Plus Supports CA Career Pathways Trust  
and Your Students with **FREE** Data Services

Webinar will start shortly

Thank you for joining us!

# Agenda

- **Welcome**  
Jim Lanich, Ph.D., Cal-PASS Plus
- **Overview of Cal-PASS Plus**  
Ken Sorey, Cal-PASS Plus
- **Cal-PASS Plus Support for Career Pathways Trust**  
Ken Sorey
- **CTE Launchboard**  
Kathy Booth, CA Community Colleges Chancellor's Office
- **Review and Questions**  
Ken Sorey

# Building the Pipeline



- Creating a shared pathway to college and career readiness
- Increasing college completion by reducing the need for remedial coursework and providing student support
- Aligning education programs with labor market demand

# Explore Data and Collaborate



- K-12 Schools**
- Community Colleges**
- Universities**
- Regional Learning Councils**

## Education-to-Workforce Pipeline

Select Your Region

OR Select Your County

East Bay

Select county



# K-12 Pipeline Reports

Select Your Economic Region

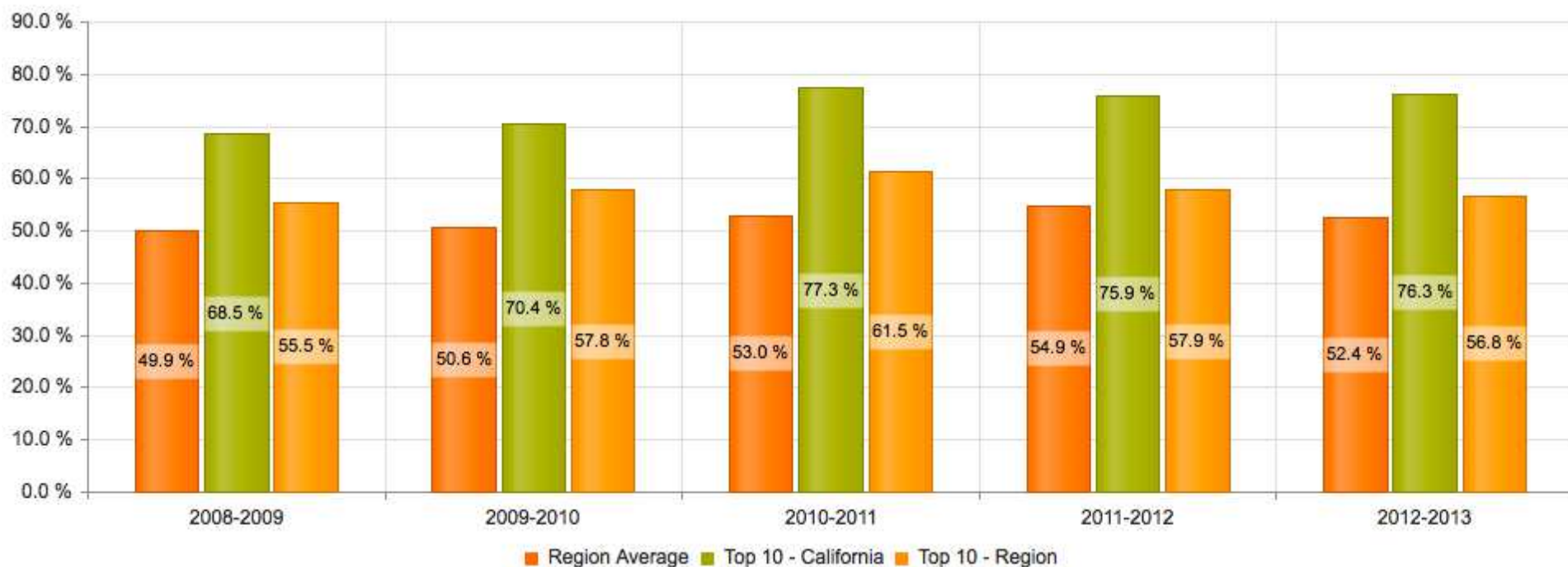
OR

Select Your County

East Bay

Select county

Percent Proficient in 3rd Grade English in East Bay Region





# K-12 Pipeline Reports

Select Your Region

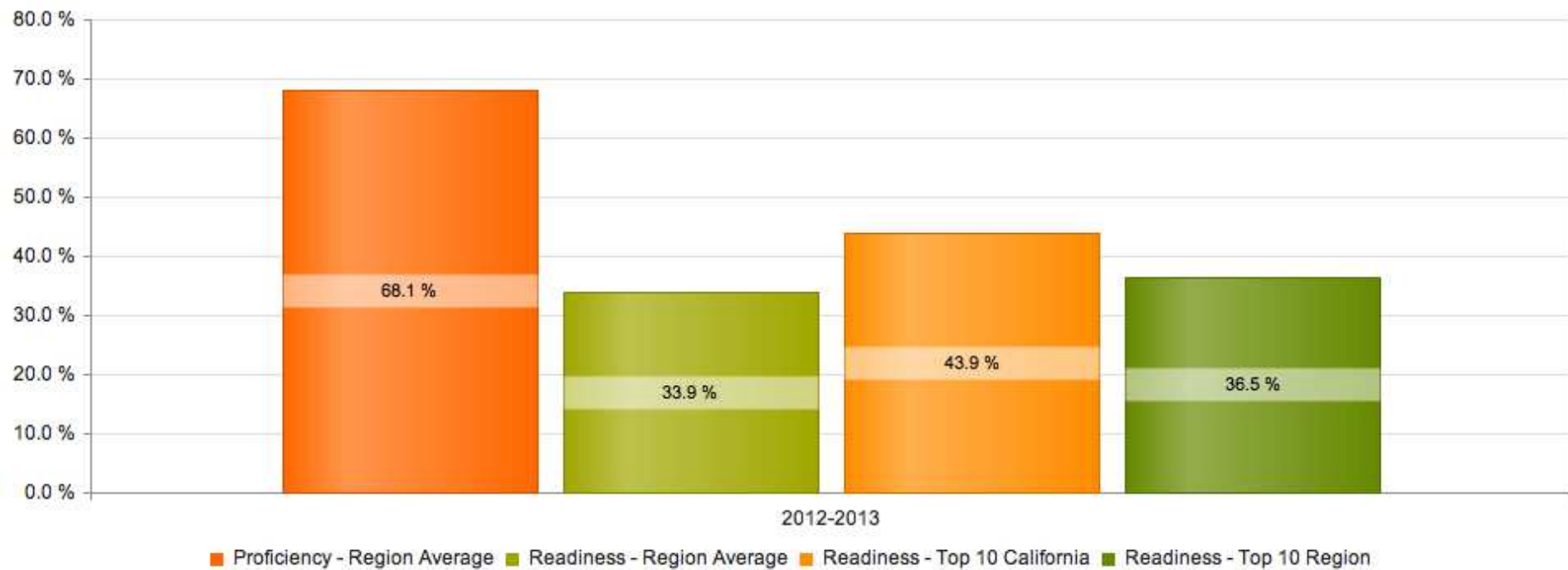
OR

Select Your County

East Bay

Select county

Percent College Ready 5th Grade in East Bay Region



Aggregate of percent college ready from EdResults backward mapping combined ELA and Math. On chart, include first bar as percent proficient, then show bar chart with region/county average college ready, then top ten in the region and top ten in the county.

Pre K-12 Schools

Community Colleges

Universities

Regional Learning Councils



# Education-to-Workforce Pipeline

Select Your Economic Region OR Select Your County

Los Angeles

Select county

Early Childhood Education

Elementary School

Middle School

High School

Community College

University

Labor Market

School Readiness

Elementary Education

High School Readiness

Click on a metric for data charts

Percent Proficient in 11th Grade English

Percent Proficient in Algebra II or Higher

% College Ready In 11th Grade English

% College Ready In 11th Grade Math

Certificates AA Degrees Transfers

Baccalaureate Completion

Employment Living Wage Jobs



# K-12 Pipeline Reports

Select Your Economic Region

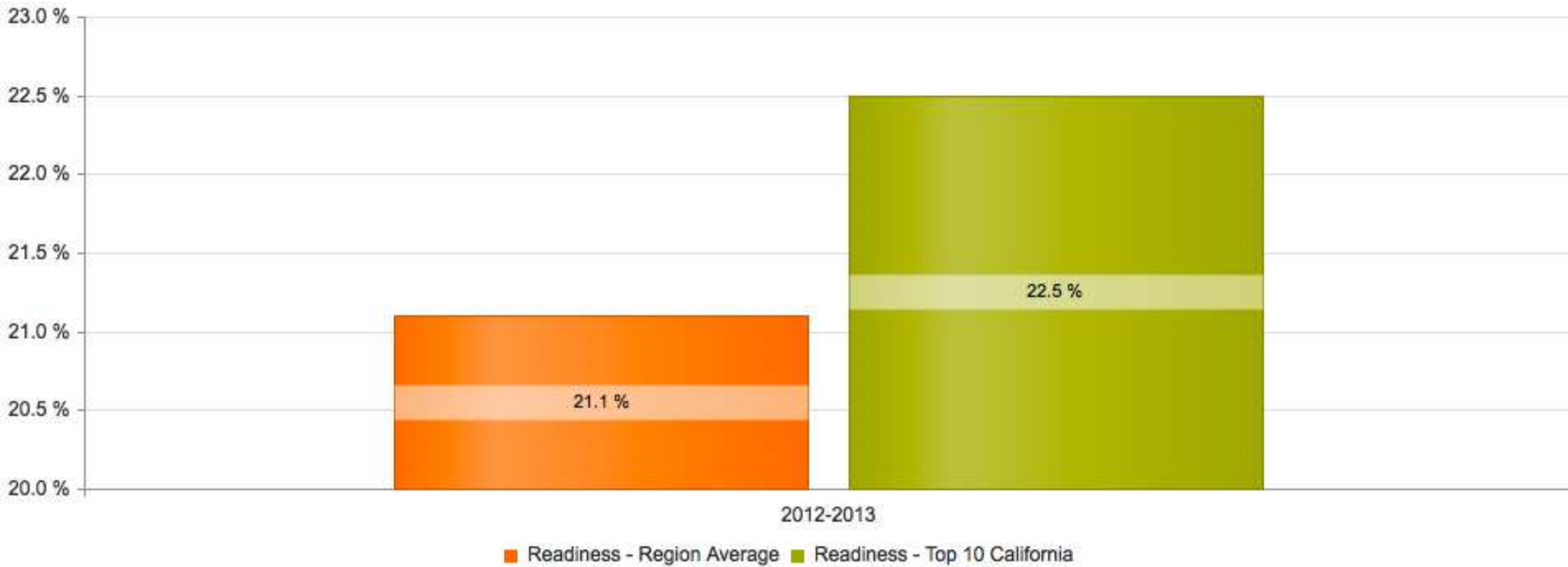
OR

Select Your County

East Bay

Select county

Percent College Ready 11th Grade Math (EAP) in East Bay Region





# Explore Data and Collaborate



K-12 Schools

Community Colleges

Universities

Regional Learning Councils

## Education-to-Workforce Pipeline

Select Your Region

OR Select Your County



# Community College Pipeline Reports

Select Your Economic Region

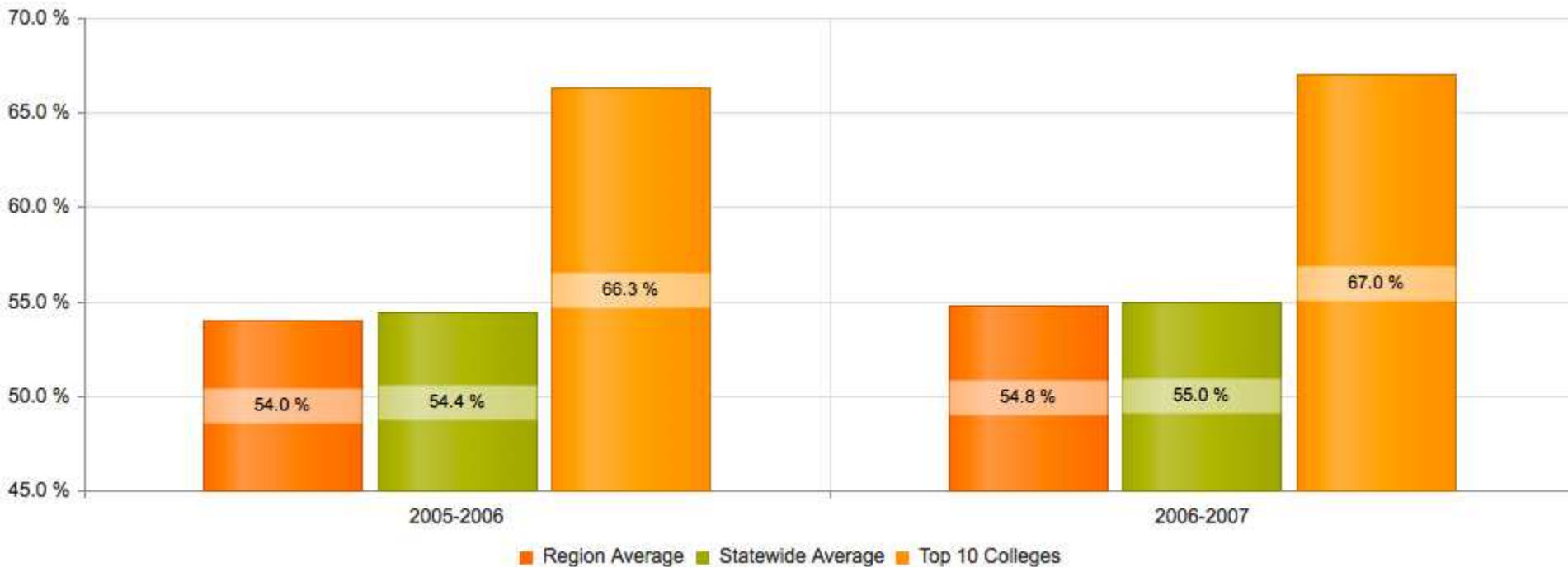
OR

Select Your County

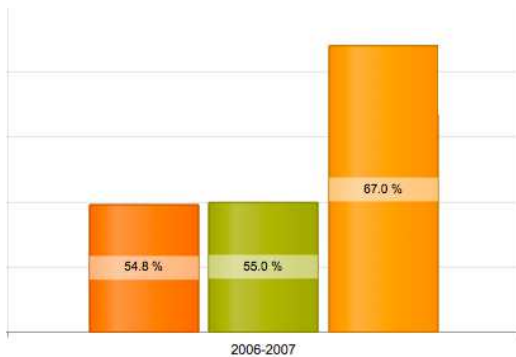
Los Angeles

Select county

% of Career Technical Education Earning Degree, Transfer or Certificate in 6 years in Los Angeles Region



# Community College Pipeline Reports



Top 10 Statewide - 2006-2007

Rank	School	District	County	Percentage
1	Moorpark College	Ventura Community College District	Ventura	70.5 %
2	Napa Valley College		Napa	69.6 %
3	Citrus College		Los Angeles	68.0 %
4	West Hills College - Lemoore	West Hills College District	Fresno	67.7 %
5	Orange Coast College	Coast District Office	Orange	67.5 %
6	Cuesta College		San Luis Obispo	67.0 %
7	Evergreen Valley College	San Jose\Evergreen Community College District	Santa Clara	66.7 %
8	Los Angeles Harbor College	Los Angeles Community College District	Los Angeles	65.7 %
9	Pasadena City College		Los Angeles	64.8 %
10	Santiago Canyon College	Rancho Santiago Community College District	Orange	64.5 %

Navigation icons: Home, Previous, 1 (selected), Next, End

1 - 10 of 10 items

# University Pipeline Reports

Select Your Economic Region

OR

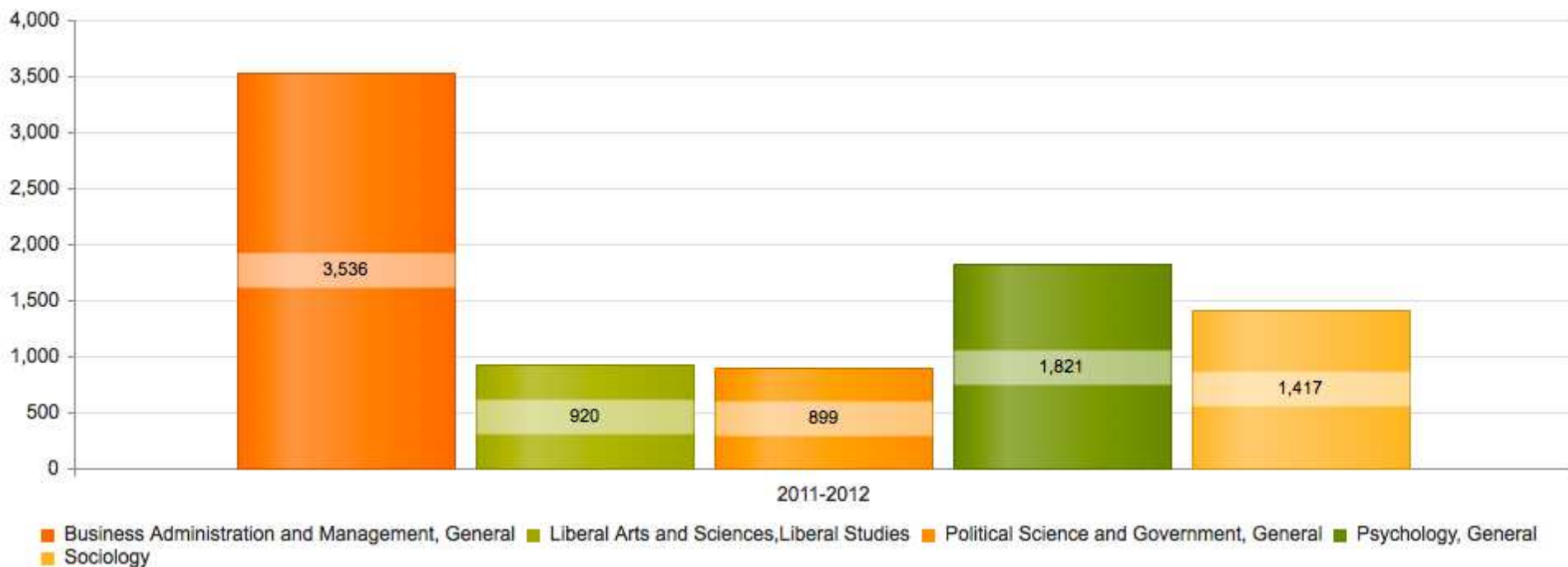
Select Your County

Los Angeles

Select county

Charts for universities may not be representative of all universities in the region or county due to missing data from institutions. This will be updated when the most recent year's data are submitted. Use caution when drawing conclusions from these charts as they are often just a sample of universities in a region or county.

Top 5 Majors by Number of Graduating Students in Los Angeles Region





# Labor Market Pipeline Reports

Select Your Economic Region

OR

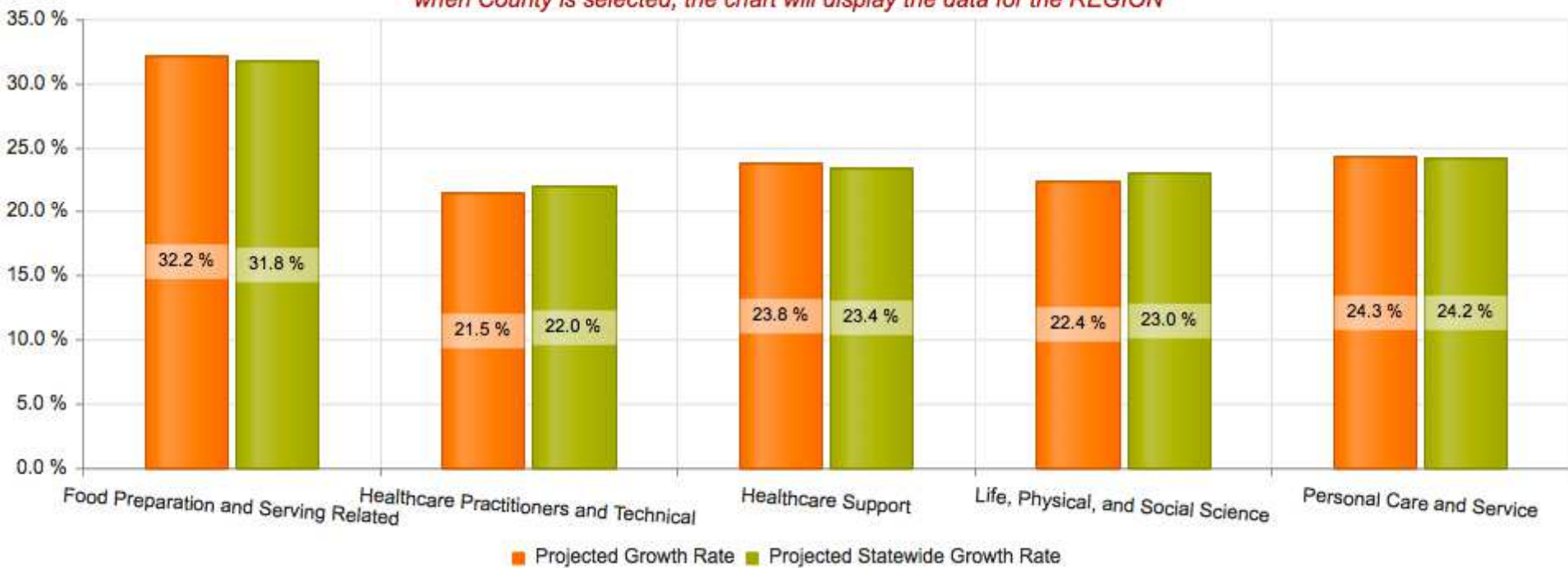
Select Your County

Los Angeles

Select county

Labor market data provided by **emsi**  
a carroll hall company

Projected Job Openings Growth Rate for Top 5 Fields in Los Angeles Region \*  
*when County is selected, the chart will display the data for the REGION*





# Cal-PASSPlus

Partnership for Achieving Student Success



Welcome to Cal-PASS Plus, California's actionable system of data linking student performance from pre-K through 16, on to college and the workplace.

## Explore Data and Collaborate

**K-12 Schools**

**Community Colleges**

**Universities**

**Regional Learning Councils**

Public Student Achievement Data

Best Practices

EAP College Readiness

Log In for Reports, Queries and Research

Join/Manage MOU

Upload Data  
Early Childhood Education

## Workforce Pipeline

Select Your Region

OR Select Your County

East Bay

Select county

Elementary School

Middle School

High School

Community College

University

Labor Market

School Readiness

Elementary Education

High School Readiness

College Readiness and Access

Certificates AA Degrees Transfers

Baccalaureate Completion

Employment Living Wage Jobs

# Students Transitions and Completions

This report will display transitions from K-12 to post-secondary by selecting a K-12 district, K-12 graduation year, and the transition to post-secondary within years.

## Search Parameters Criteria

### K-12 District\*

Select K-12 District

Please select a K-12 district.

### K-12 Graduation Year\*

Select graduation year

### Transition to Post-Secondary Within\*

*Number of years is inclusive (i.e. "2 years" includes all students from "1 year" and "2 years", "3 years" include previous and "3 years").*

Select transition time

### K-12 District ONLY



Run Feeder Summary Query

Run Feeder Summary With ELA Remediation Query

Run Feeder Summary With Math Remediation Query

Run Feeder Student Success Summary

Run Feeder Student Success Summary With ELA Remediation Query

Run Feeder Student Success Summary With Math Remediation Query

# How Are Students Progressing Through The Pipeline?



## Feeder Student Success Summary By Selected Organization, K-12 Graduation Year, and Transition Within Selected Years

Data Current As Of: **3/6/2014 11:37:11 AM**

K-12 Graduation Year: **2004-2005**

Transition to Post-Secondary Within: **1 year**

Organization: [REDACTED]

K-12 District	Community College	University	Demographic	K-12 Students	CC Certificate Received	CC AA/AS Received	CC Transfer to University	CC Transfer to University with AA/AS	BA/BS Received
<span style="background-color: black; color: black;">[REDACTED]</span> Unified	District Total			932	49	81	175	40	152
<b>Total</b>				<b>932</b>	<b>49</b>	<b>81</b>	<b>175</b>	<b>40</b>	<b>152</b>

# Are Students Progressing Through The Pipeline?

K-12 Graduation Year: 2004-2005

Transition to Post-Secondary Within: 1 year

Organization: XYZ Unified

Math Remediation	K-12 District	K-12 School	Community College	University	Demographic	K-12 Students	CC Certificate Received	CC AA/AS Received	CC Transfer to University	CC Transfer to University with AA/AS	BA/BS Received
Remediation	XYZ Unified	High School A	K-12 School Total			144	8	23	40	13	23
		High School B	K-12 School Total			139	13	17	27	7	19
		High School C	K-12 School Total			16	1	3	1	0	1
		High School D] (Continuation)	K-12 School Total			8	0	0	0	0	0
		K-12 District Total				307	22	43	68	20	43
	Remediation Total				307	22	43	68	20	43	
No Remediation	Remediation Total				354	27	38	116	20	114	
No Transition*	Remediation Total				320	0	0	0	0	0	
<b>Total</b>						<b>932</b>	<b>49</b>	<b>81</b>	<b>175</b>	<b>40</b>	<b>152</b>

# Cal-PASS Plus Support for CA Career Pathways Trust

- Data collection and reporting locally, regionally and to CDE – FREE
- Analysis tools and support – CTE dashboards, consultation, best practices, guides and materials on data collection
- Collaboration networks – summits, webinars and regional facilitation
- Custom reports as needed
- Most important – connection to the only system of data in California that links student level records longitudinally and across segments and on to the workplace



# Your Role in CA Career Pathways Trust

- Mapping pathways
- Flagging students – particularly K-12
- Submitting cohort data – these are my students
- Helping us recruit K-12 partners to Cal-PASS Plus

# Cal-PASS Plus Support for CCPT – Key Events

- Monthly web forums to discuss data collection, data reports and best practices for CTE
  - August, September, October
- CTE Pathway Summit – November 2014
- Quarterly updates of data and results into dashboard
- Direct support to applicants



CALIFORNIA COMMUNITY COLLEGES

**Doing What MATTERS™**

FOR JOBS AND THE ECONOMY

## **CCPT and the LaunchBoard**

March 6, 2014



## What's at Stake

### The Good News

- After years of declining funding, CTE programs have an opportunity to rebuild
- Numerous overlapping efforts will help to strengthen pathways,

**regional cooperation, and industry**



# Understanding the LaunchBoard

The LaunchBoard provides data to California community colleges and feeder K-12 school districts on the effectiveness of career technical education (CTE) programs.

Supported by the California Community College's Chancellor's Office (CCCCO) and hosted by Cal-PASS Plus, the LaunchBoard aggregates program-level data including:

- Student characteristics, progress, and completion from the CCCCCO database





# The LaunchBoard and the Pathways Trust Grant

- A number of the Momentum Points in the Common Metrics tab align with the CCPT metrics and can help gauge progress toward the goals of multiple grants
- Cal-PASS Plus is building a K-12 version of the LaunchBoard, so that both K-12 and community college partners can see the outcomes of their efforts



# LaunchBoard Contents

Go to [www.calpassplus.org/launchboard](http://www.calpassplus.org/launchboard)



The CTE Launchboard, a statewide data system supported by the California Community Colleges Chancellor's Office and hosted by Cal-PASS Plus, provides data to California community colleges and their feeder K-12 school districts on the effectiveness of CTE programs. This information is intended to facilitate local, regional and statewide conversations about how to improve student transitions from K12 to college and on to the workforce.

## Launchboard Features

The Launchboard includes several tools to support collecting and viewing information on student outcomes in CTE.

### Program Snapshot

The Program Snapshot section includes program information and student outcomes that are grouped into categories such as enrollments, milestones, credentials, employment, and alignment with regional labor market demand.

### Common Metrics

The Common Metrics section enables colleges to upload and view information on 34 indicators used to track progress on the California Community College Chancellor's Office's Doing What Matters framework.

### Additional Tracking

The Additional Tracking tool allows colleges to gather information on learners who participate in training or events outside the college application and enrollment process, such as contract education or career fairs.

### Help Desk

This area provides users with a place to request assistance and view resources.





# Program Snapshot Tab

College: College 2 | Programs: Accounting (050200) | Current Year: 2011-2012 | Refresh

	Metric 5 Year	Metric Current	% Increase / Decrease	Trend
Enrollments				
Capacity				
Support				
Milestones				
▶ Course Completion Rate	84.70 %	83.50 %	-1.40 %	⬇️
Metric 5 Year   Metric Current   % Increase / Decrease   Trend				
▶ Course Success Rate	72.00 %	70.60 %	-1.90 %	⬇️
Metric 5 Year   Metric Current   % Increase / Decrease   Trend				
▶ GPA	2.89	2.95	2.10 %	⬆️
Metric 5 Year   Metric Current   % Increase / Decrease   Trend				
▶ Attained 9+ units	54.0	55	1.90 %	⬆️
Metric 5 Year   Metric Current   % Increase / Decrease   Trend				
▶ Term to Term Retention	1136.2	1156	1.70 %	⬆️
Credentials				
Employment				
Demand				

View program-level information in categories such as enrollment, employment, and demand.



# Program Snapshot Tab

Chancellor's office approved certificates	38.0	54	42.10 %	▲
Gender				
Male	6.0	6		●
Female	30.0	47	56.70 %	▲
Unknown	1.0	1		●
Ethnicity				
Black or African American				●
Asian	14.0	17	21.40 %	▲
Hispanic / Latino	4.0	4		●
Unknown / Non-Respondent	4.0	11	175.00 %	▲
White	15.0	22	46.70 %	▲
Age				
20 to 24	3.0	6	100.00 %	▲
25 to 29	7.0	7		●
30 to 34	7.0	14	100.00 %	▲
35 to 39	5.0	4	-20.00 %	▼
40 to 49	8.0	17	112.50 %	▲
50 +	6.0	6		●
DSPS				
EOPS				

Drill down to see how outcomes vary for student characteristics such as demographics or DSPS and EOPS status



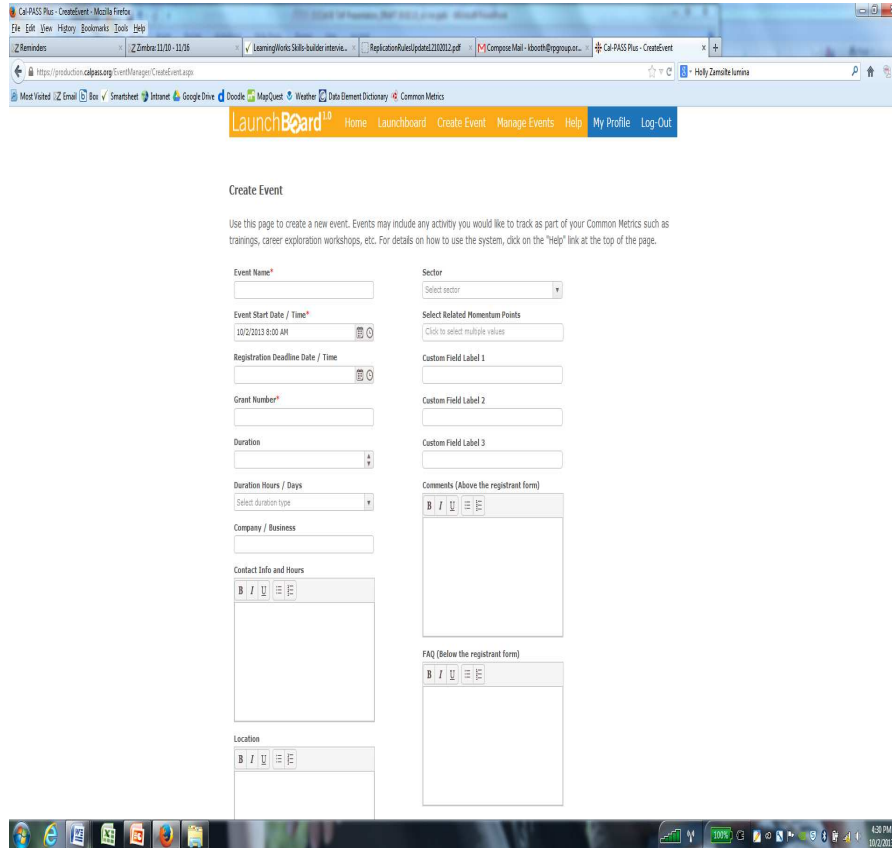
# Common Metrics Tab

General Education and Transfer Progress Cluster				
	Metric 5 Year	Metric Current	% Increase / Decrease	Trend
MP 19. Completed a work readiness Soft Skills training program (either stand-alone or embedded)				<a href="#">Upload Missing Data</a>
	Metric 5 Year	Metric Current	% Increase / Decrease	Trend
MP 20. Completed College Level English and/or Math	218	262	20.20 %	
	Metric 5 Year	Metric Current	% Increase / Decrease	Trend
MP 21. Completed the CSU-GE or IGETC transfer track/certificate (Primary Goal)				<a href="#">Upload Missing Data</a>
	Metric 5 Year	Metric Current	% Increase / Decrease	Trend
MP 22. Completed Major requirements in a CTE area (Primary Goal)				<a href="#">Upload Missing Data</a>
	Metric 5 Year	Metric Current	% Increase / Decrease	Trend
MP 23. Completed an A.A. Degree in a major aligned with student's CTE pathway (Primary Goal)				<a href="#">Upload Missing Data</a>
	Metric 5 Year	Metric Current	% Increase / Decrease	Trend
MP 24. Completed an A.A. Degree with a major different from student's CTE pathway				<a href="#">Upload Missing Data</a>

View information on metrics for Doing What Matters braided funding and many CCPT metrics



# Additional Tracking Tab



Capture data on learners who are not enrolled as students, such as contract education participants or for one-time activities





## Find Out More

- Test out a demo of the LaunchBoard  
[www.calpassplus.org/Launchboard/LaunchboardDemo.aspx](http://www.calpassplus.org/Launchboard/LaunchboardDemo.aspx)
- Find resources covering everything from recorded webinars on LaunchBoard features to FAQs on grant reporting requirements for community college funding  
<http://doingwhatmatters.cccco.edu/launchboard.aspx>

# Review

- **This is our collective opportunity to get the CTE pathway data system RIGHT**
- Include Cal-PASS Plus in your application
- Coordinate with Cal-PASS Plus to recruit K-12 districts to participate and upload data
- Plan for a coherent system to map CTE pathways in your consortium and flag students
- Attend one of the many support sessions and CTE summits offered by Cal-PASS Plus

# Questions



# Contact Us

Ken Sorey

Project Director, Cal-PASS Plus

ken@calpass.org

(916) 498-8980

Michele Badovinac

Director of K-12 Outreach

michele@calpass.org

(209)468-9189

Emily Lawrence

Director of College and University Outreach

emily@calpass.org

(209) 954-5820